

The Green Roots Project: Connecting Students to their World

Regent Square Community Meeting 2
February 24, 2010

The Environmental Charter School
at Frick Park



Regent Square Civic Association

- a not-for-profit volunteer-led community association with a membership and elected Board of Directors
- RSCA Goal: To maintain a sense of community and continuously improve the quality of life in the Regent Square neighborhood through
 - acting as a liaison to government agencies
 - organizing community events
 - initiating neighborhood improvements
 - collaborating with other community organizations
 - disseminating information to the community; and
 - operating as an advocate on community-wide issues

**The Environmental Charter School
at Frick Park**



Ground Rules for Tonight's Meeting

- We ask that attendees allow presenters time to deliver their prepared material.
- At the conclusion of the presentation we will open up the floor to anyone that has questions or concerns.
- During the open question time RSCA volunteers will bring a microphone to audience members.
- Questions and concerns will be recorded to ensure accuracy

**The Environmental Charter School
at Frick Park**



Agenda



- The Green Roots Project
- Preliminary Site Planning and Architectural Design
- Traffic Engineering
- Questions and Answers



**The Environmental Charter School
at Frick Park**



Rothschild
COLLABORATIVE
Doyno
ARCHITECTURE AND URBAN DESIGN



Who We Are



- A Public Charter School
- Quality Human Resources
 - Educators
 - Parents
 - Parent Community Organization (PCO)
 - Environmental Focus Group
 - Partners
 - Students
- Highly successful first year
- Environmentally focused school
 - Strong science foundation
 - Place-based experiences
 - Connection between disciplines

**The Environmental Charter School
at Frick Park**



The Green Roots Project at ECS



- Provide additional educational space to fulfill the intent of the charter to grow from K-4 to K-8
- Maintain proximity to Frick Park to reinforce place-based and environmental science-focused learning
- Maximize and enhance the relationship with the environment and the community

**The Environmental Charter School
at Frick Park**



Questions from the first Community Meeting



- Will there be further expansion beyond the scope of the current plan?
- Can the school be one class per grade and remain successful at the current building size?
- What will happen if the school cannot grow onsite?
- How is the school planning to expand its carpooling efforts?

**The Environmental Charter School
at Frick Park**



Rothschild
Doyno
COLLABORATIVE
ARCHITECTURE AND URBAN DESIGN



Rothschild Doyno Collaborative

Architecture and Urban Design



**The Environmental Charter School
at Frick Park**

Rothschild
COLLABORATIVE
Doyno
ARCHITECTURE AND URBAN DESIGN

Environmental Assets

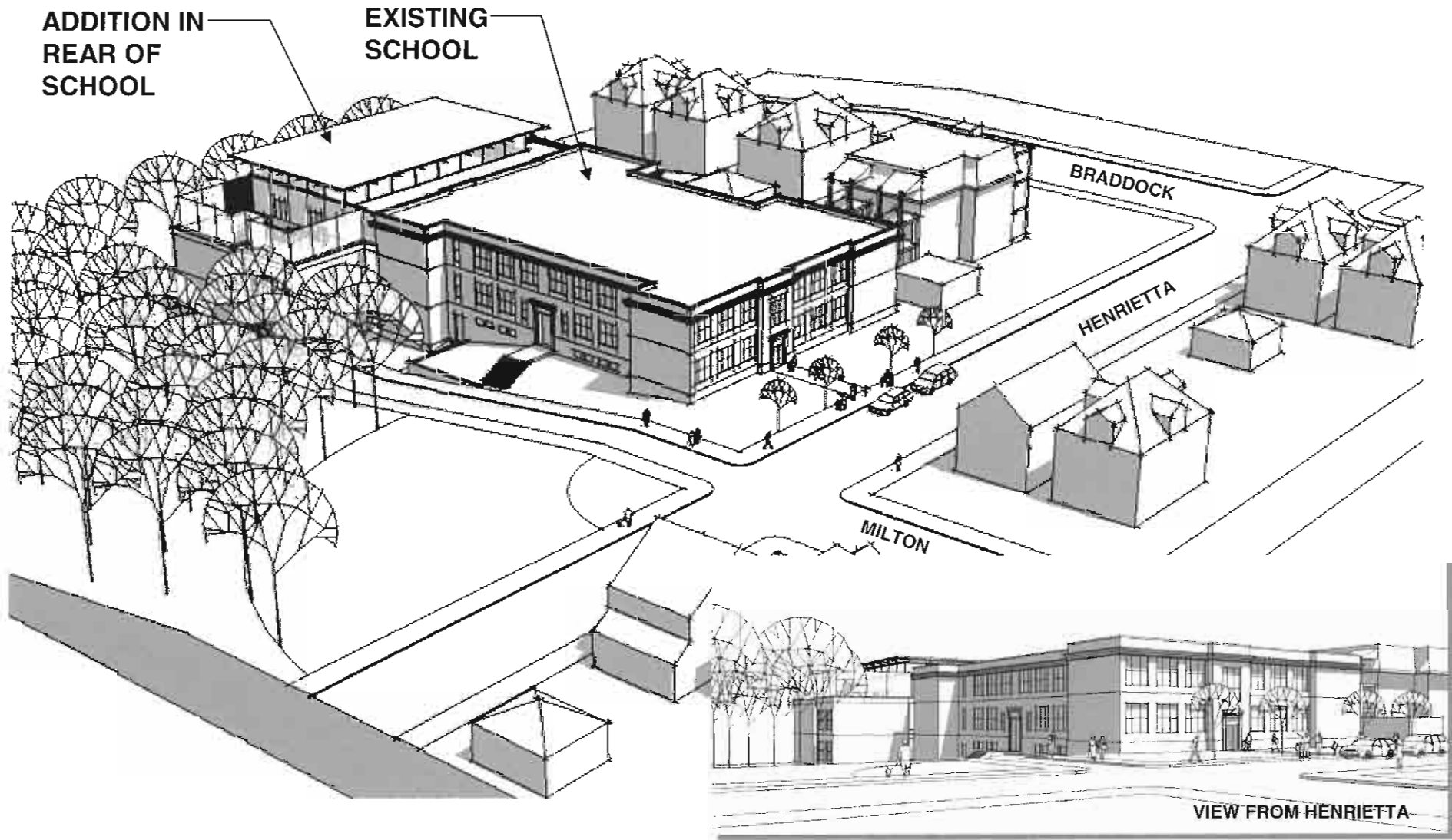


- Playground
- Ball fields
- Athletic Field
- Park Trails
- Turtle Park
- Nine Mile Run Watershed
- Lower Frick Park



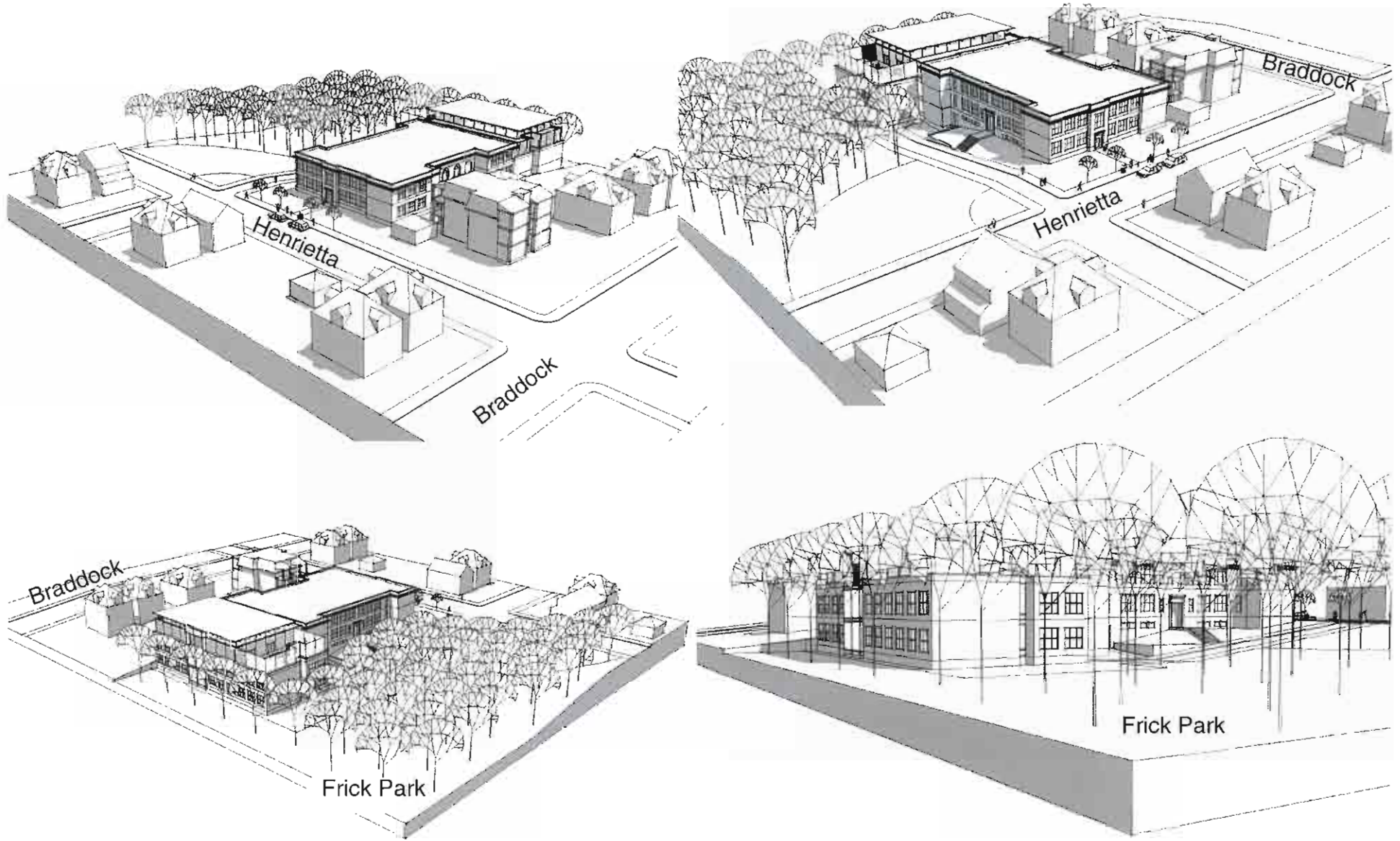
**The Environmental Charter School
at Frick Park**





The Environmental Charter School at Frick Park

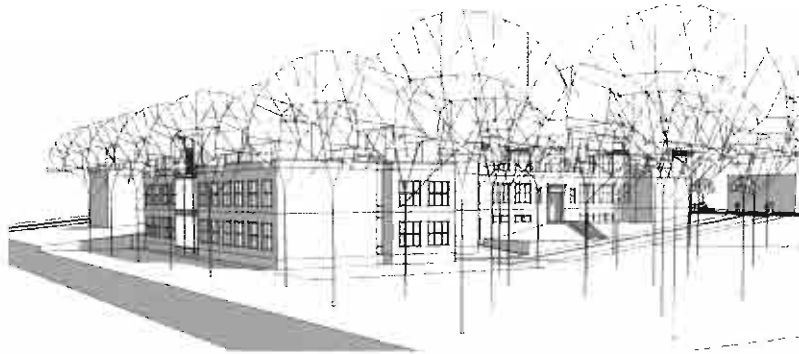
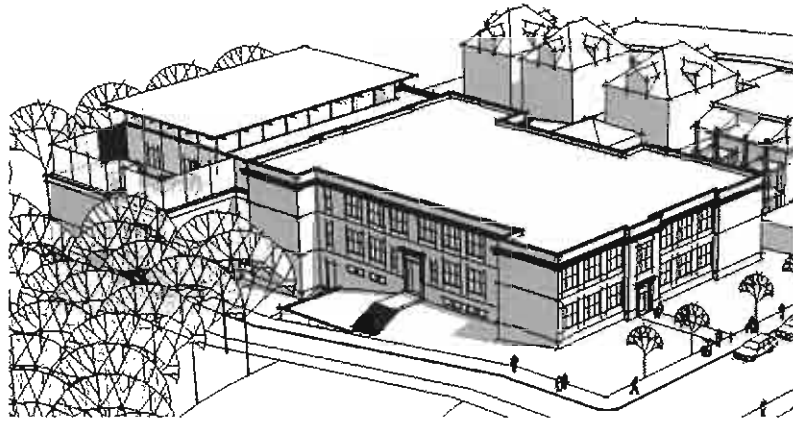




The Environmental Charter School at Frick Park



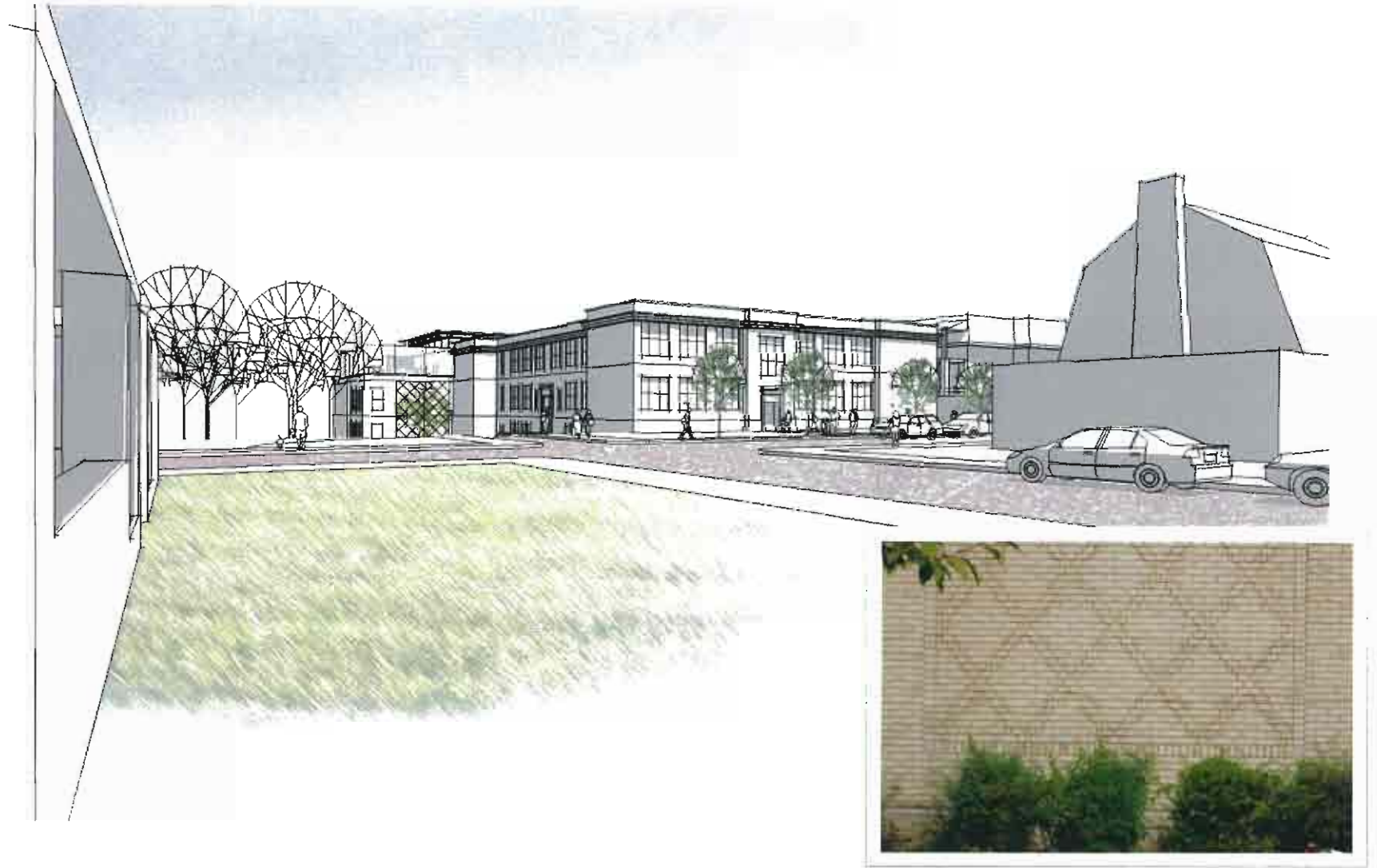
Questions from the first Community Meeting



- What's the view from my house?
- How tall is the addition?
- How will you handle rainwater runoff?
- How does the building relate to zoning setbacks?
- What will the view be from the park?

**The Environmental Charter School
at Frick Park**

View From 906 Milton Street



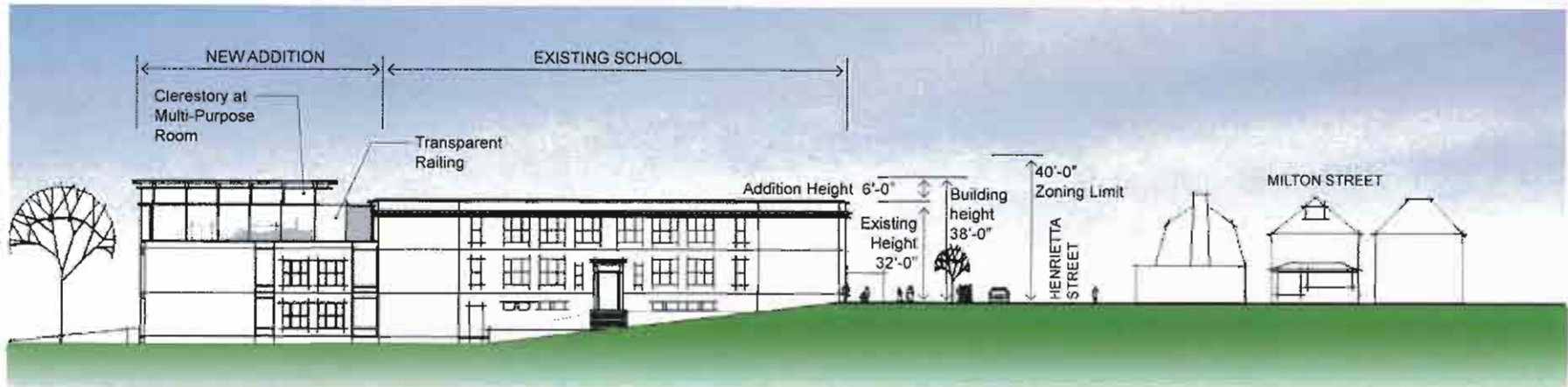
**The Environmental Charter School
at Frick Park**



Height of the Project



Existing Milton Street Elevation



Proposed Milton Street Elevation

The Environmental Charter School at Frick Park



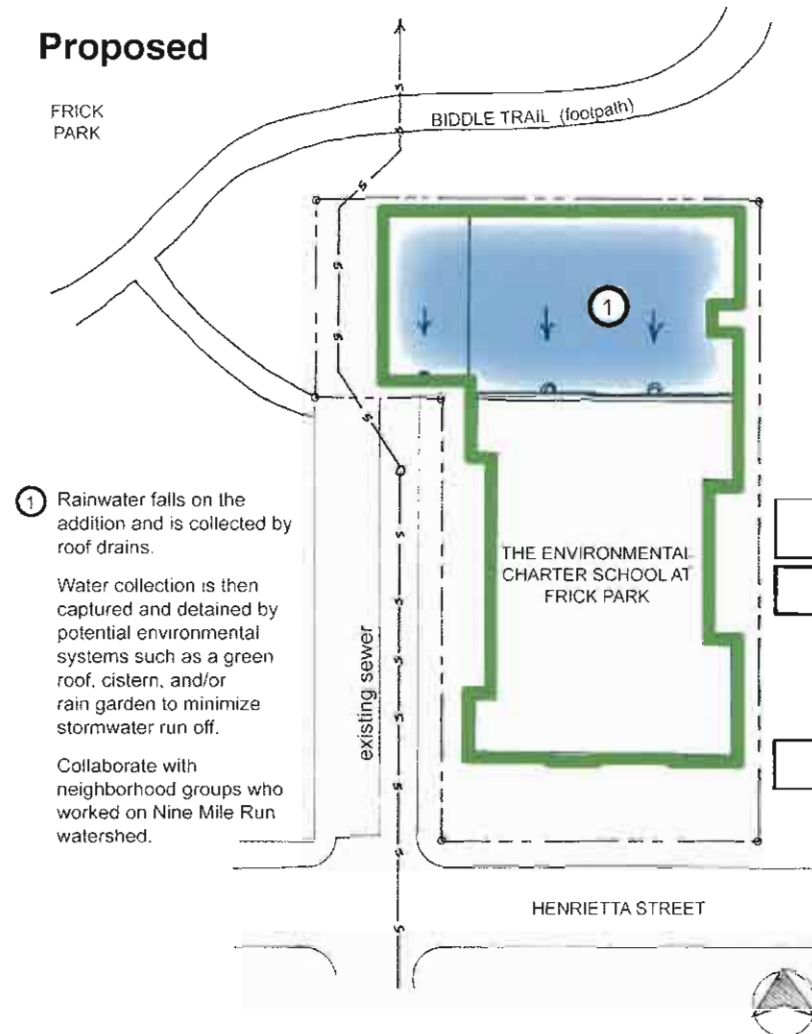
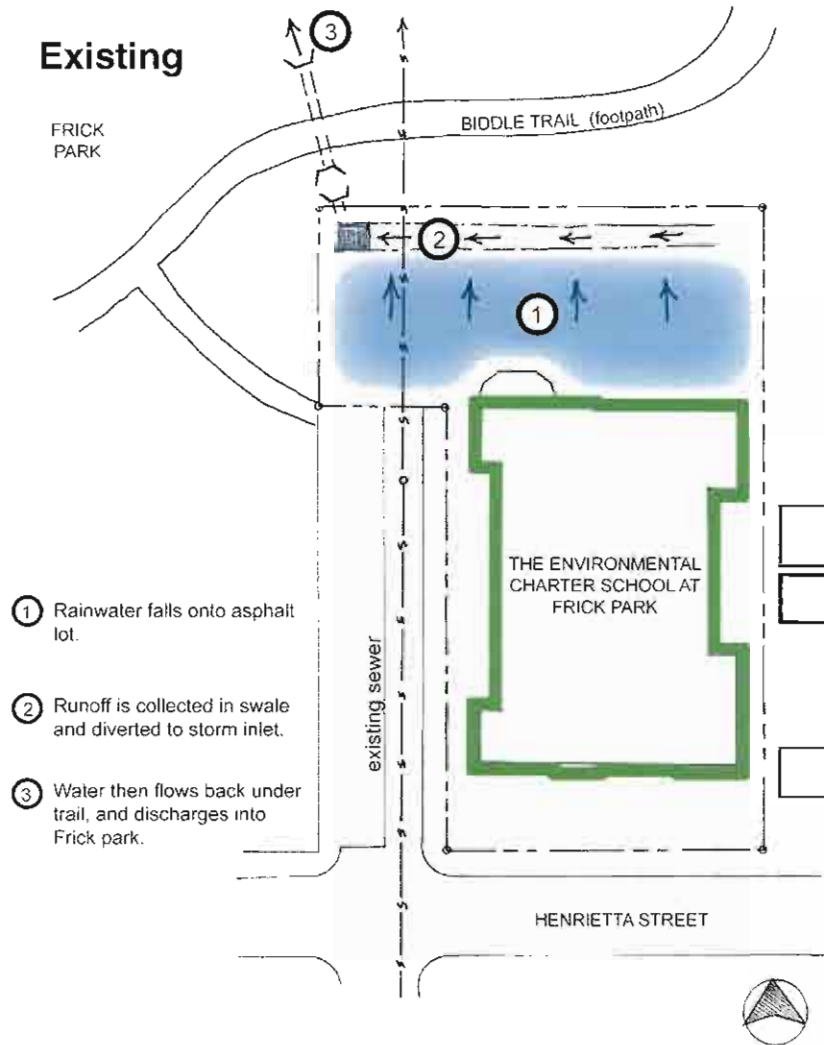
Existing Stormwater Management Photos



The Environmental Charter School at Frick Park



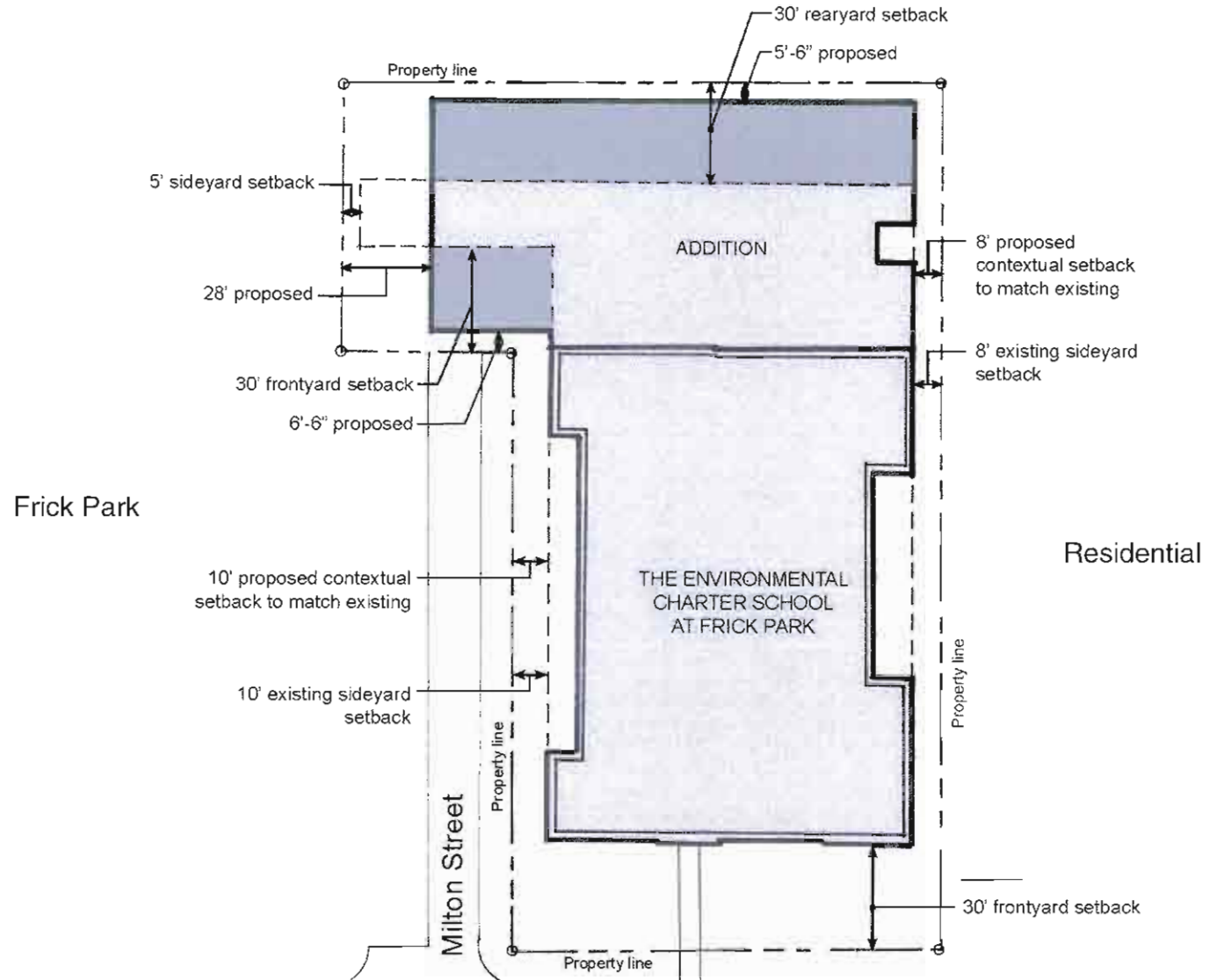
Stormwater Management Diagram



The Environmental Charter School at Frick Park



Setbacks



The Environmental Charter School at Frick Park



View From Biddle Trail



**The Environmental Charter School
at Frick Park**



View From Biddle Trail



The Environmental Charter School



Wilbur Smith Associates

Traffic Engineers



**The Environmental Charter School
at Frick Park**



Traffic Engineering

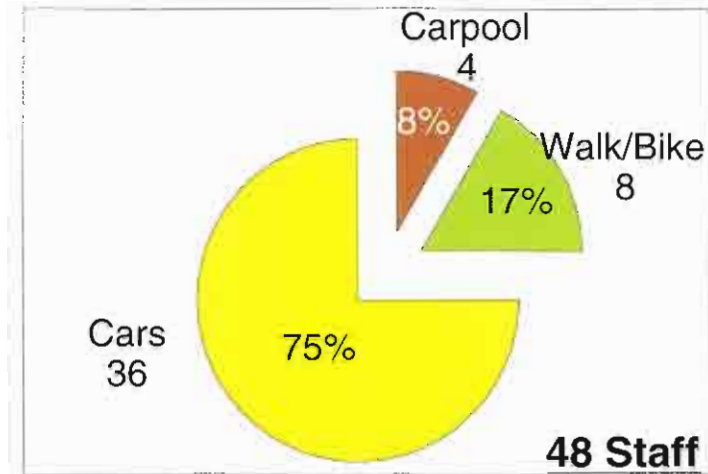
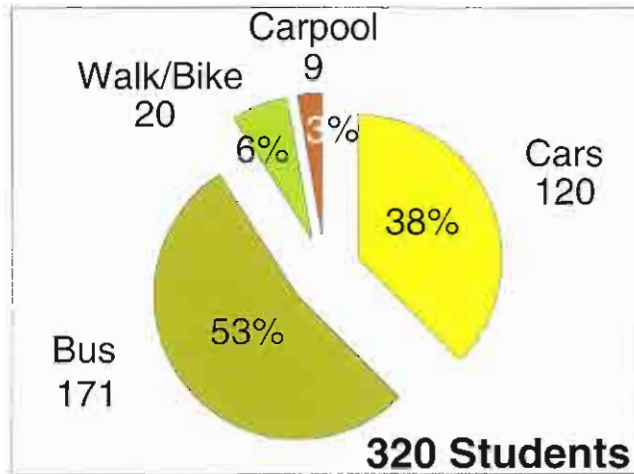
- How Do People Get to School?
 - Existing and Projected
 - Students and Staff
- Current and Projected Operations
 - Parking and Traffic Policy
 - Parent Drop-off and Pick-up
 - Bus Drop-off and Pick-up
 - Visitor Parking
 - Staff Parking
 - Event Parking
- Traffic Analysis
 - Data Collection Methodology
 - Existing A.M. and P.M. Traffic Volumes
 - Projected A.M. and P.M. Traffic Volumes

**The Environmental Charter School
at Frick Park**

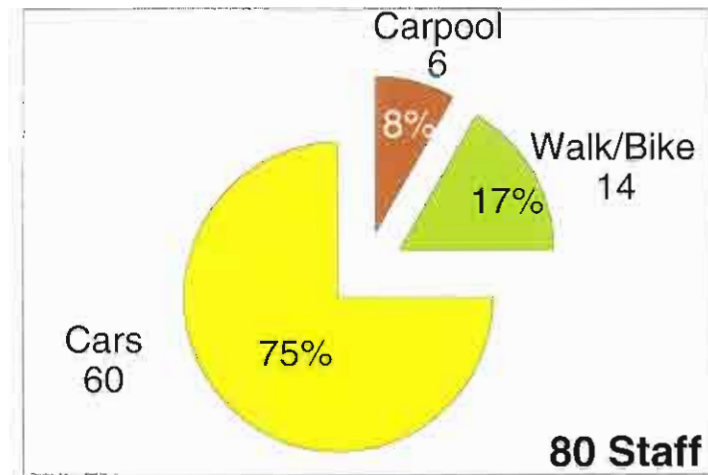
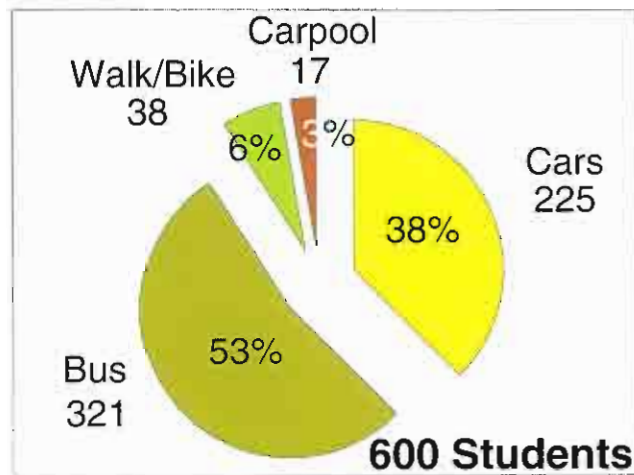


How Do People Get to School?

Existing
K-4



Projected
K-8



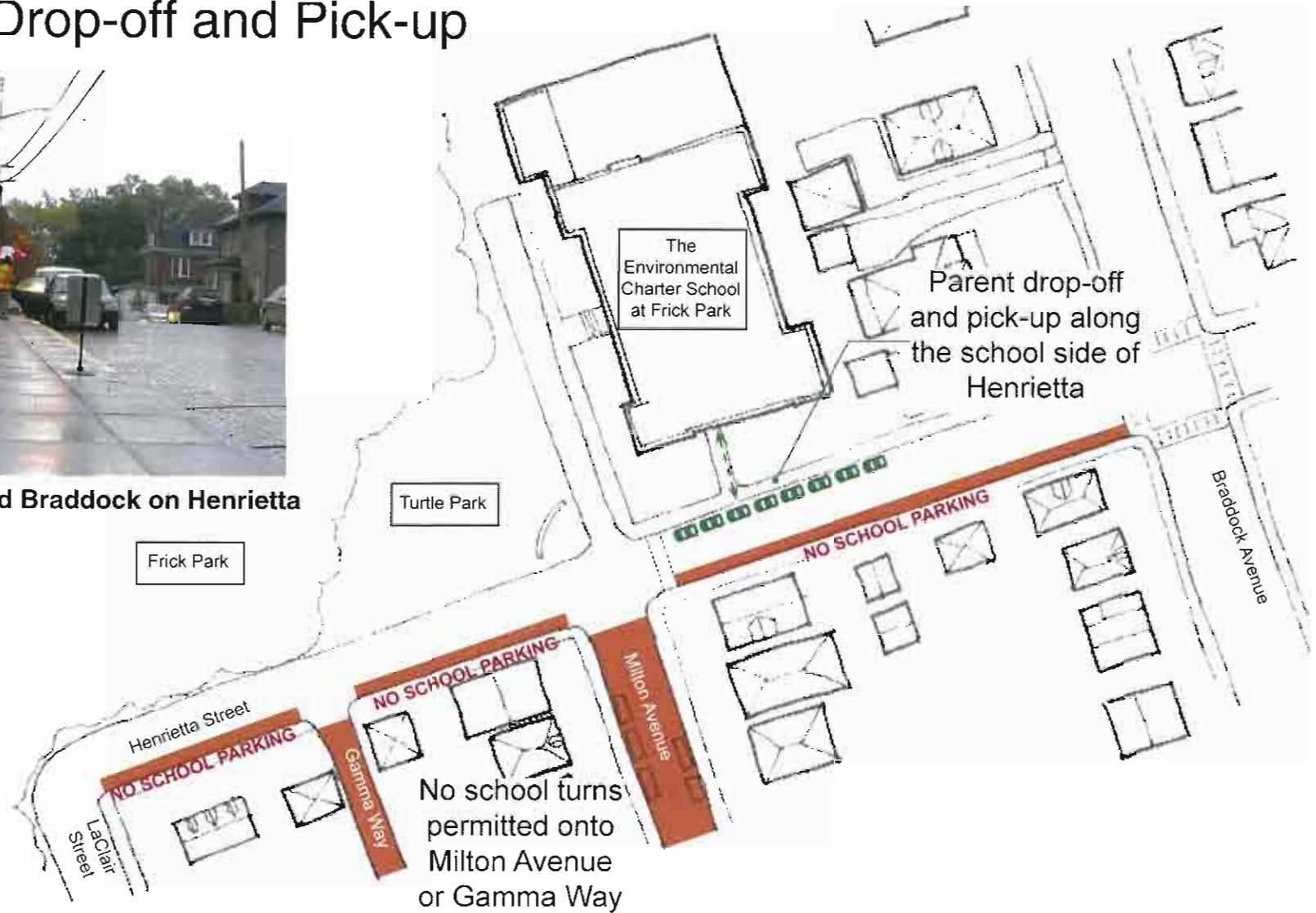
**The Environmental Charter School
at Frick Park**



Parent Drop-off and Pick-up



Looking toward Braddock on Henrietta



The Environmental Charter School at Frick Park



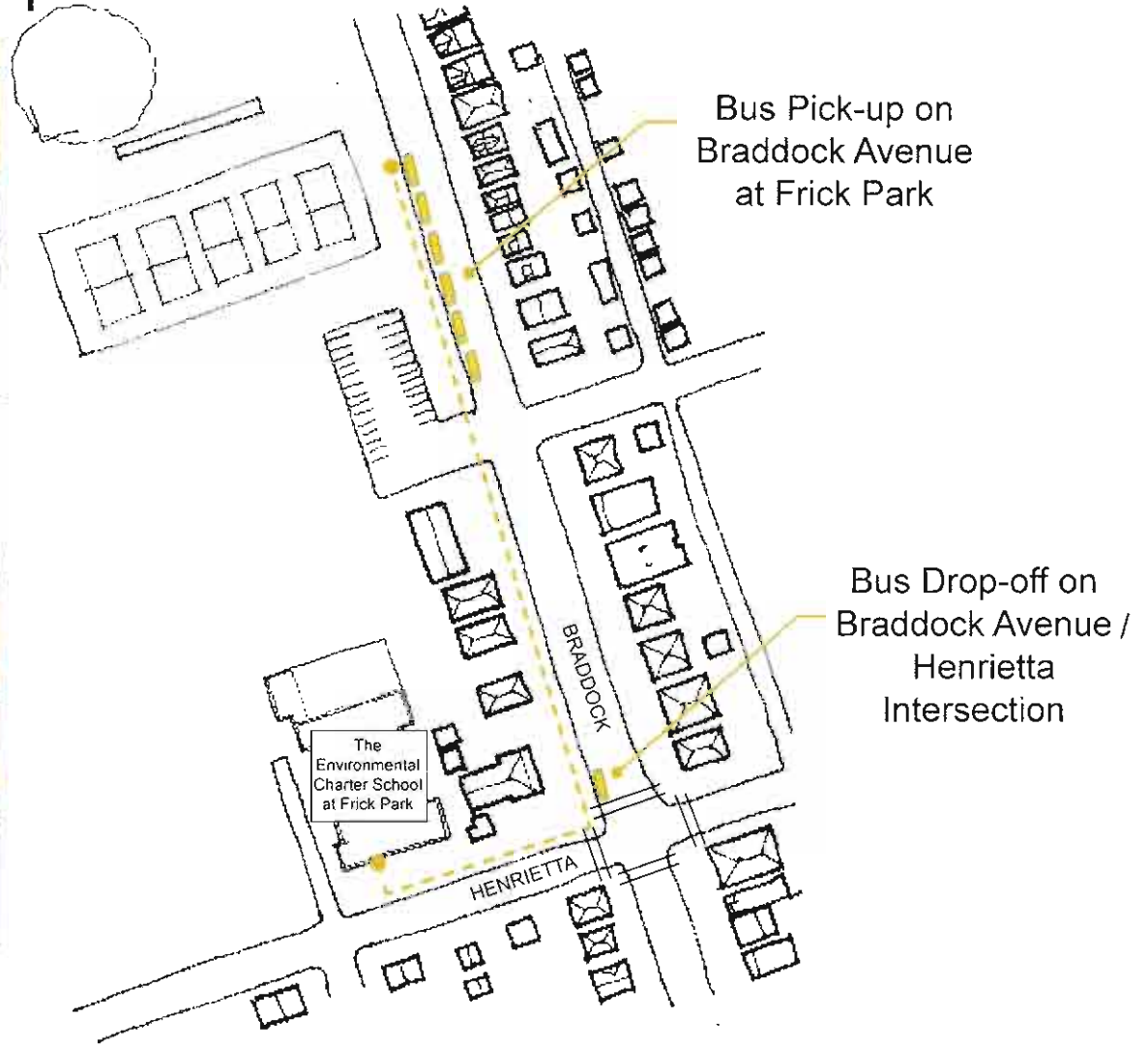
Bus Drop-off and Pick-up



Bus Drop-off at Braddock Avenue / Henrietta intersection



Bus Pick-up on Braddock Avenue at Frick Park



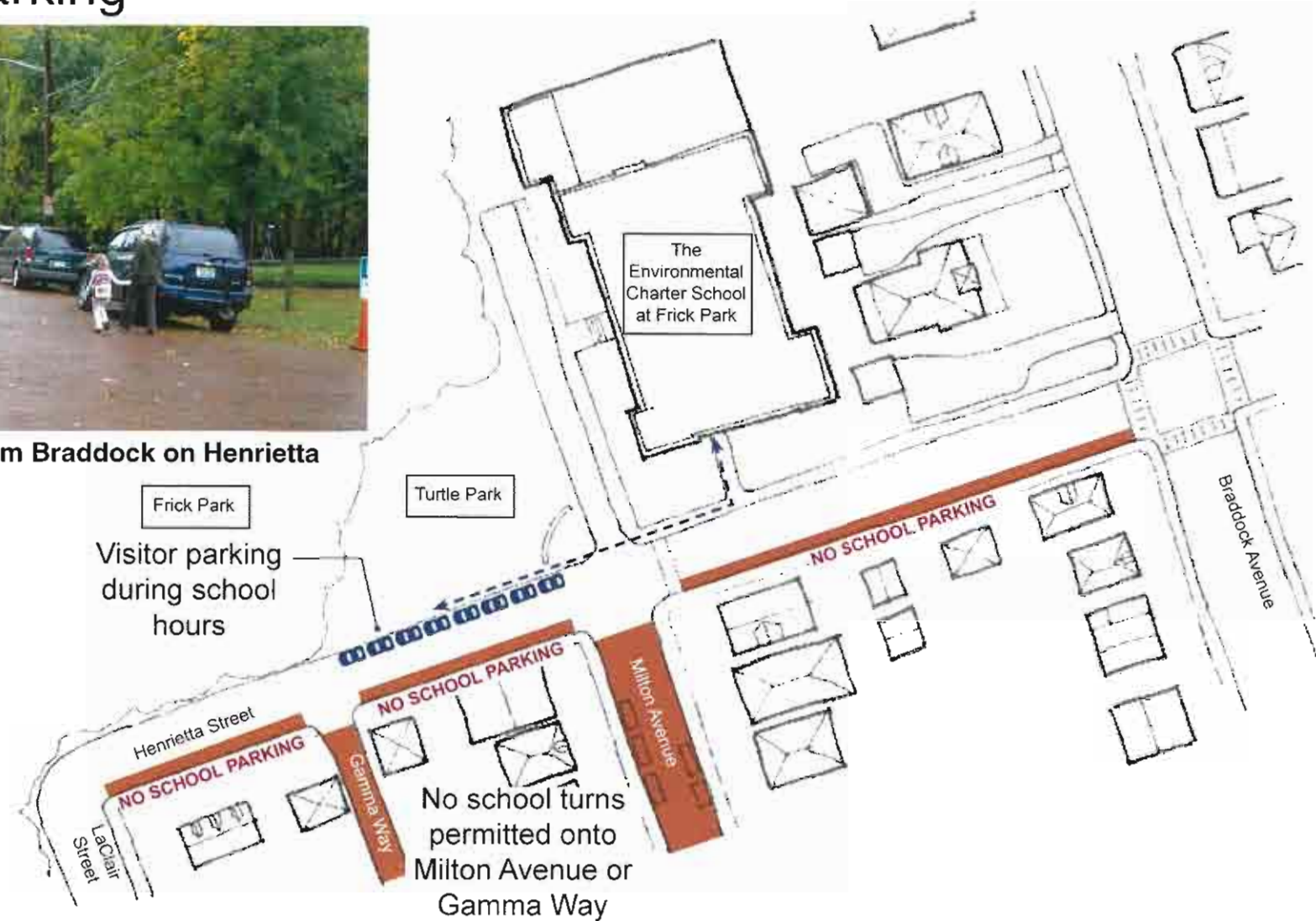
The Environmental Charter School at Frick Park



Visitor Parking



Looking away from Braddock on Henrietta



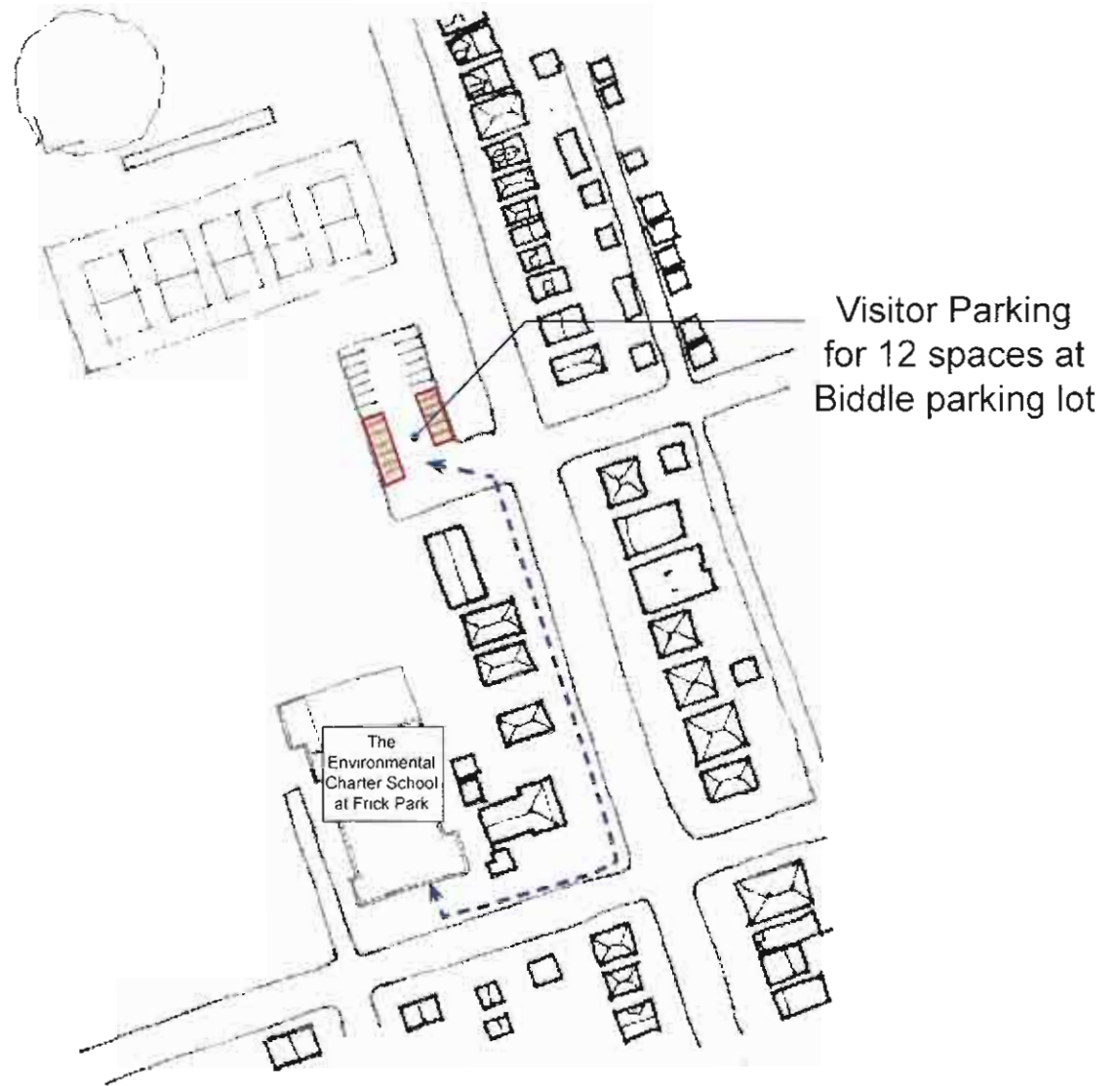
The Environmental Charter School at Frick Park



Visitor Parking



Biddle parking lot



The Environmental Charter School at Frick Park



Staff Parking

All staff parking will be off site at Edgewood Towne Center in a leased lot for 80 spaces.



**The Environmental Charter School
at Frick Park**



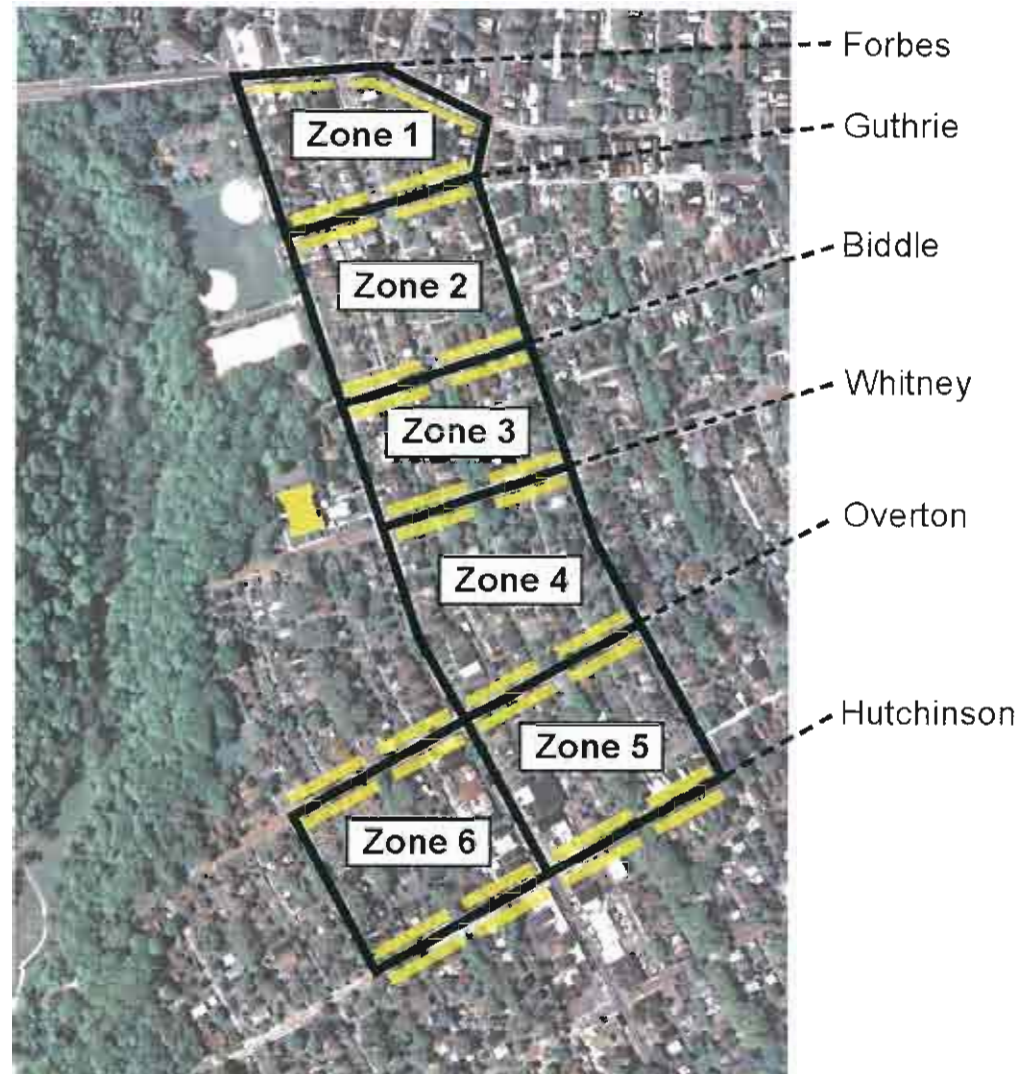
Large Event Parking (250 cars)

Existing:

- Large event parking for entire school population 2 times a year

Projected:

- Large event parking for half of school population 4 times a year
- Parents assigned to parking zones



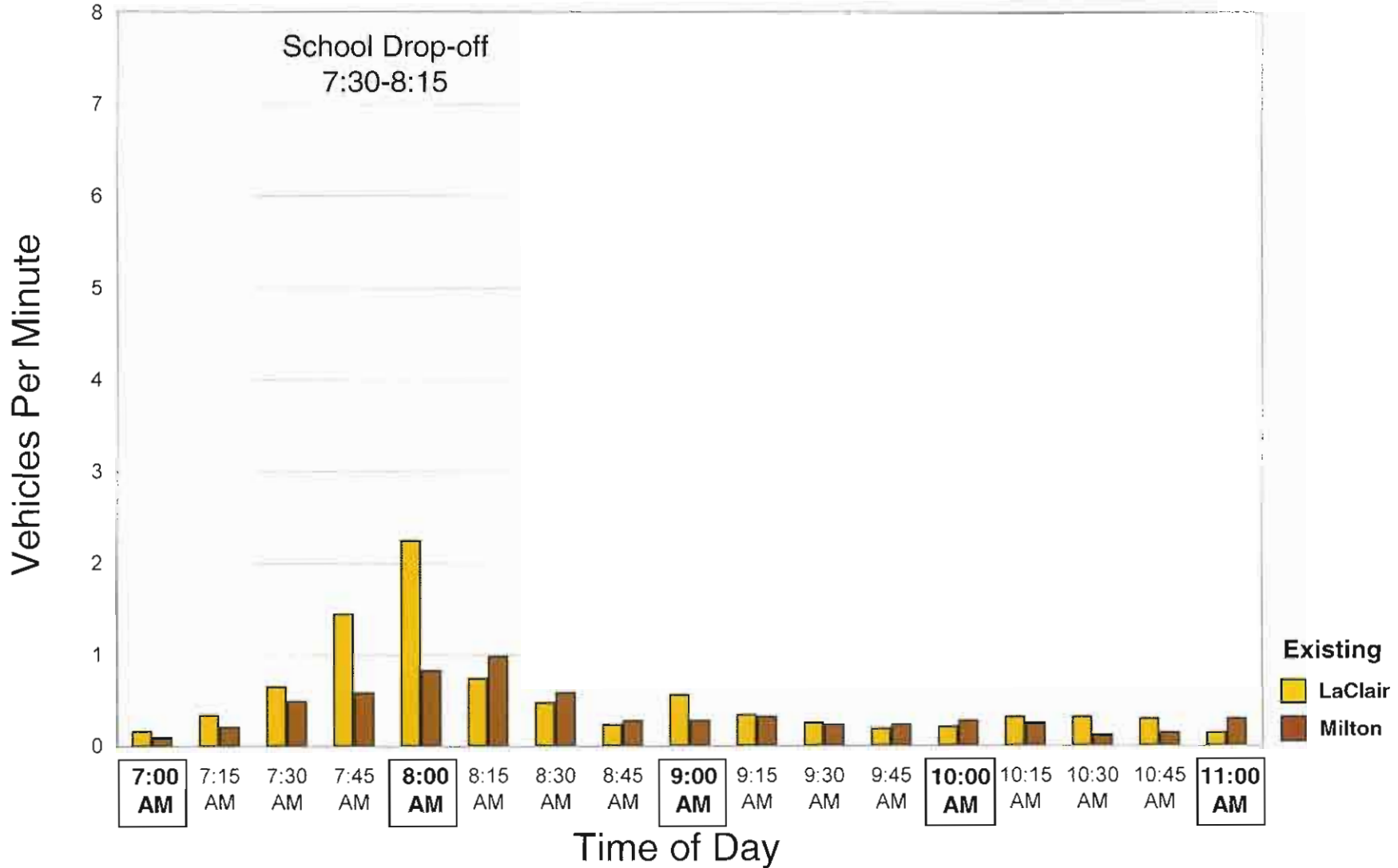
**The Environmental Charter School
at Frick Park**



Rothschild
COLLABORATIVE
Doyno
ARCHITECTURE AND URBAN DESIGN



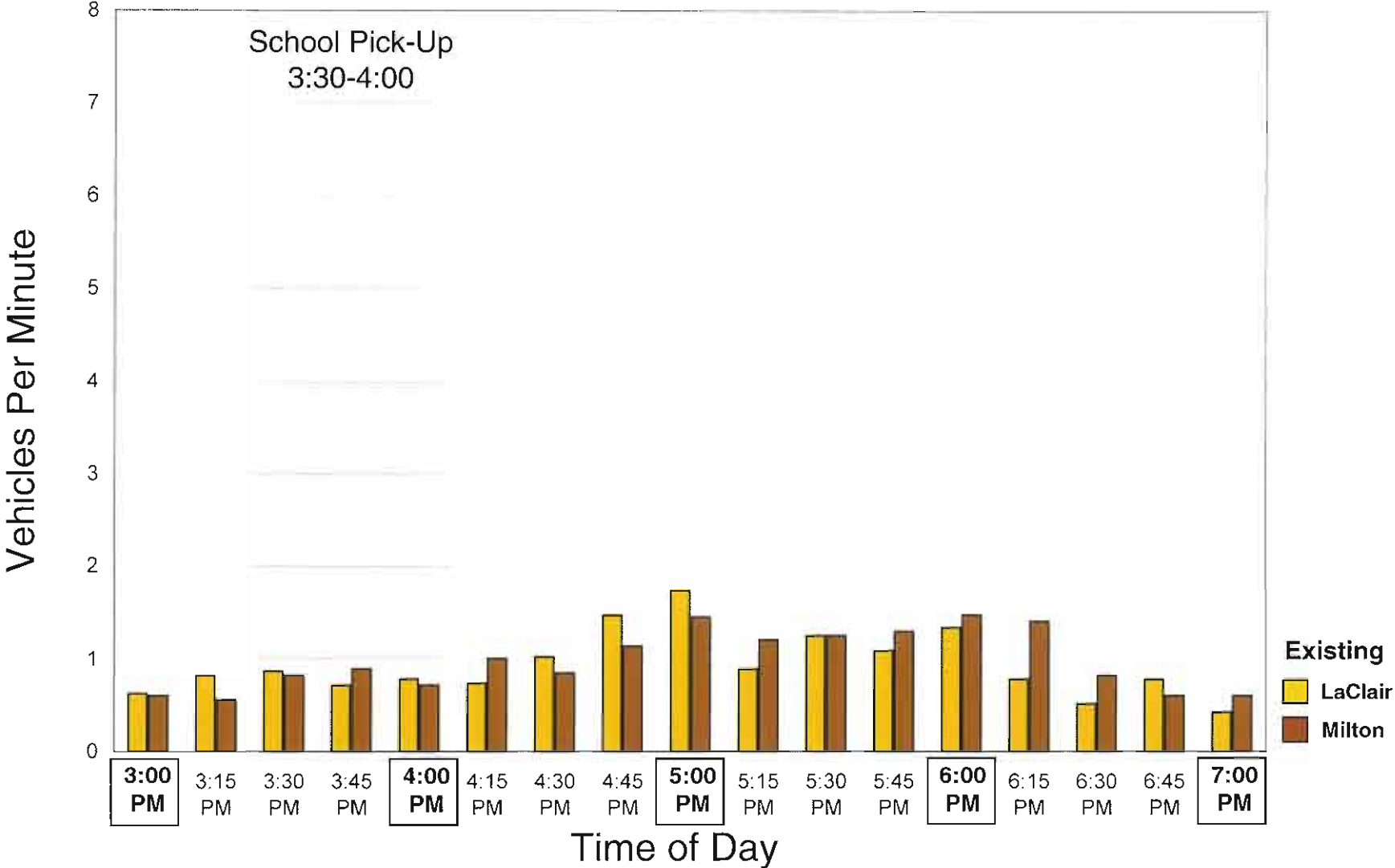
Existing AM Traffic



**The Environmental Charter School
at Frick Park**



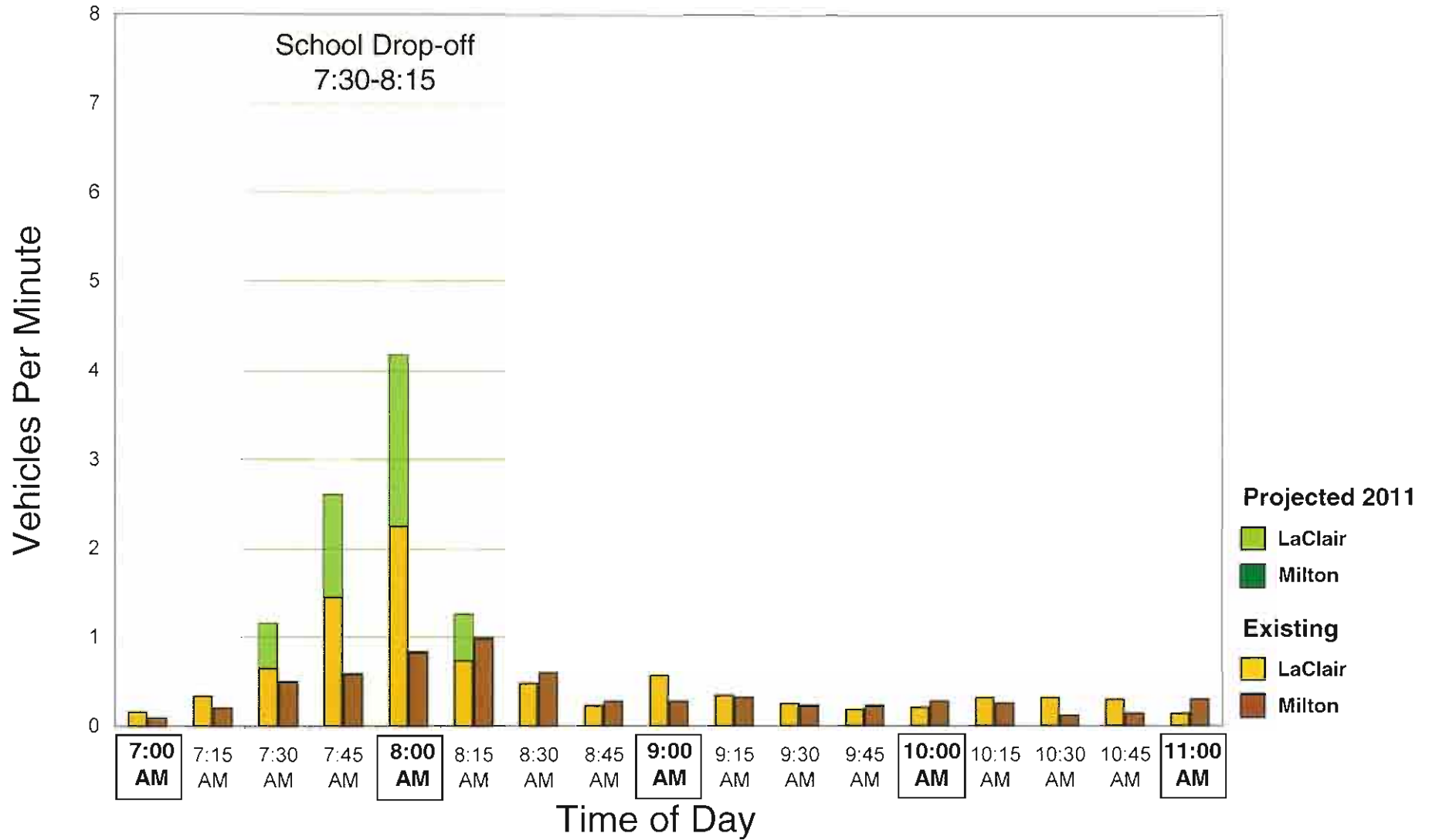
Existing PM Traffic



The Environmental Charter School
at Frick Park



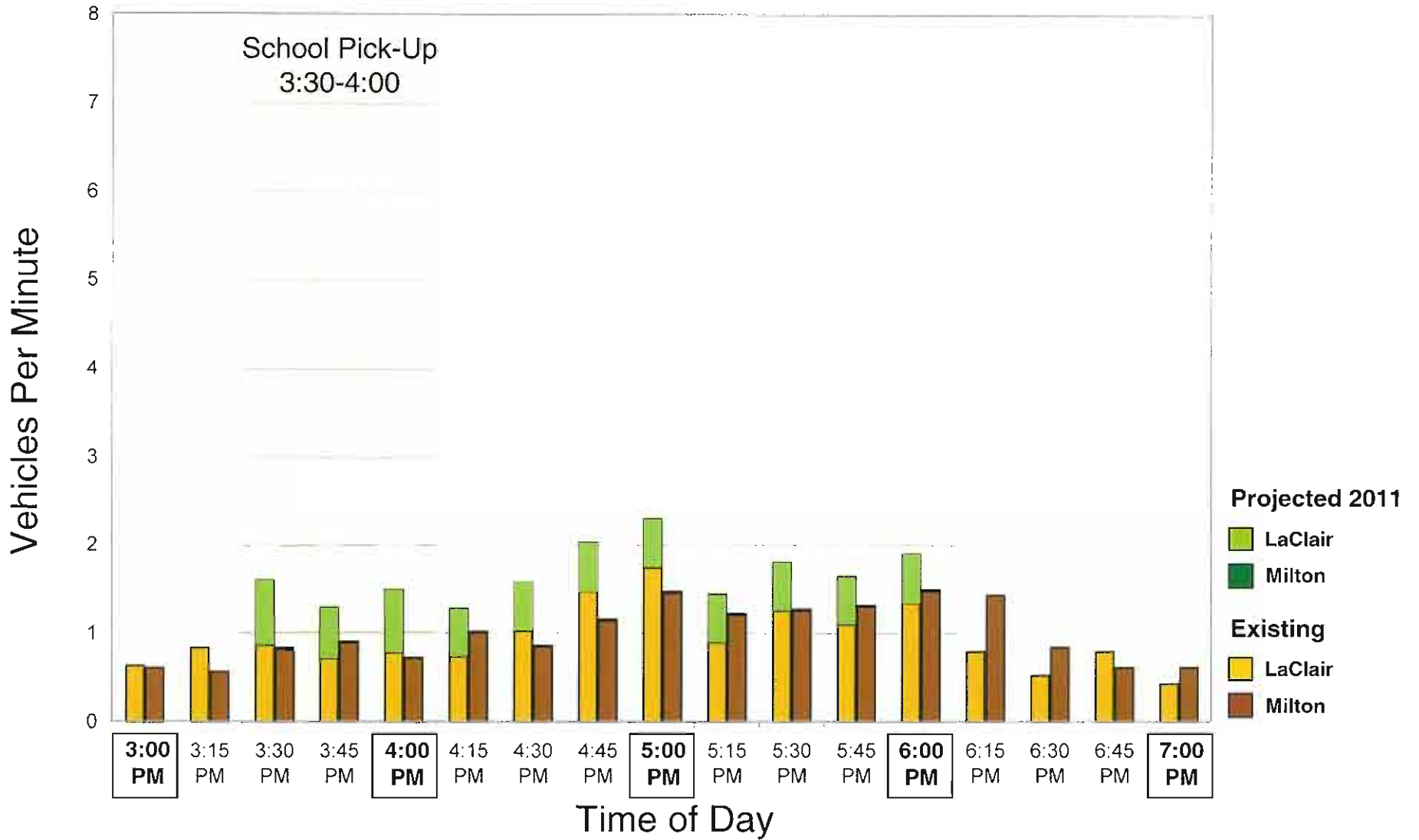
Projected AM Traffic



**The Environmental Charter School
at Frick Park**



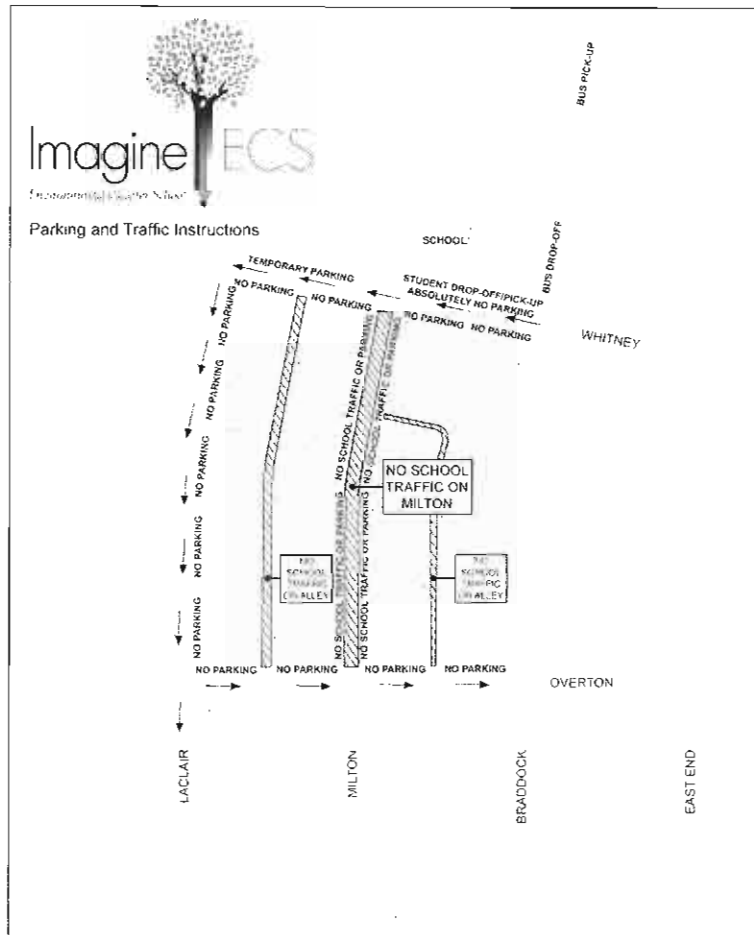
Projected PM Traffic



**The Environmental Charter School
at Frick Park**



Questions from the first Community Meeting



- Describe when and where the traffic study data was taken.
- Describe the potential school zone.
- What will the impact of the AM traffic be on the existing intersections and on Braddock Avenue?
- Can you give more details regarding the large event parking?
- Describe how the shuttle for staff parking will work.

**The Environmental Charter School
at Frick Park**



Traffic Study Details

- Objective illustration of present and projected traffic
- Submitted to City, becomes matter of public record

Automatic Traffic Recorders:



- Tues 10/13 – Thurs 10/15
- Tues 11/17 – Thurs 11/19
(shown in earlier graphs)

Hand counts at intersections:

- Tues 11/17

School Traffic Observations

- Tues 10/6, am and pm
- Thurs 10/15, am and pm

-  Intersections with hand counts
-  Automatic Traffic Recorder Locations



The Environmental Charter School at Frick Park

Potential School Zone

- Speed Limit of 15 mph in a specified zone during school hours:
7:45 – 8:15 am
3:30 – 4:00 pm
- Posted signage indicating hours and speed limit
- Increases awareness of school use on Braddock Avenue



ECS at Frick Park

Potential School Zone





**The Environmental Charter School
at Frick Park**



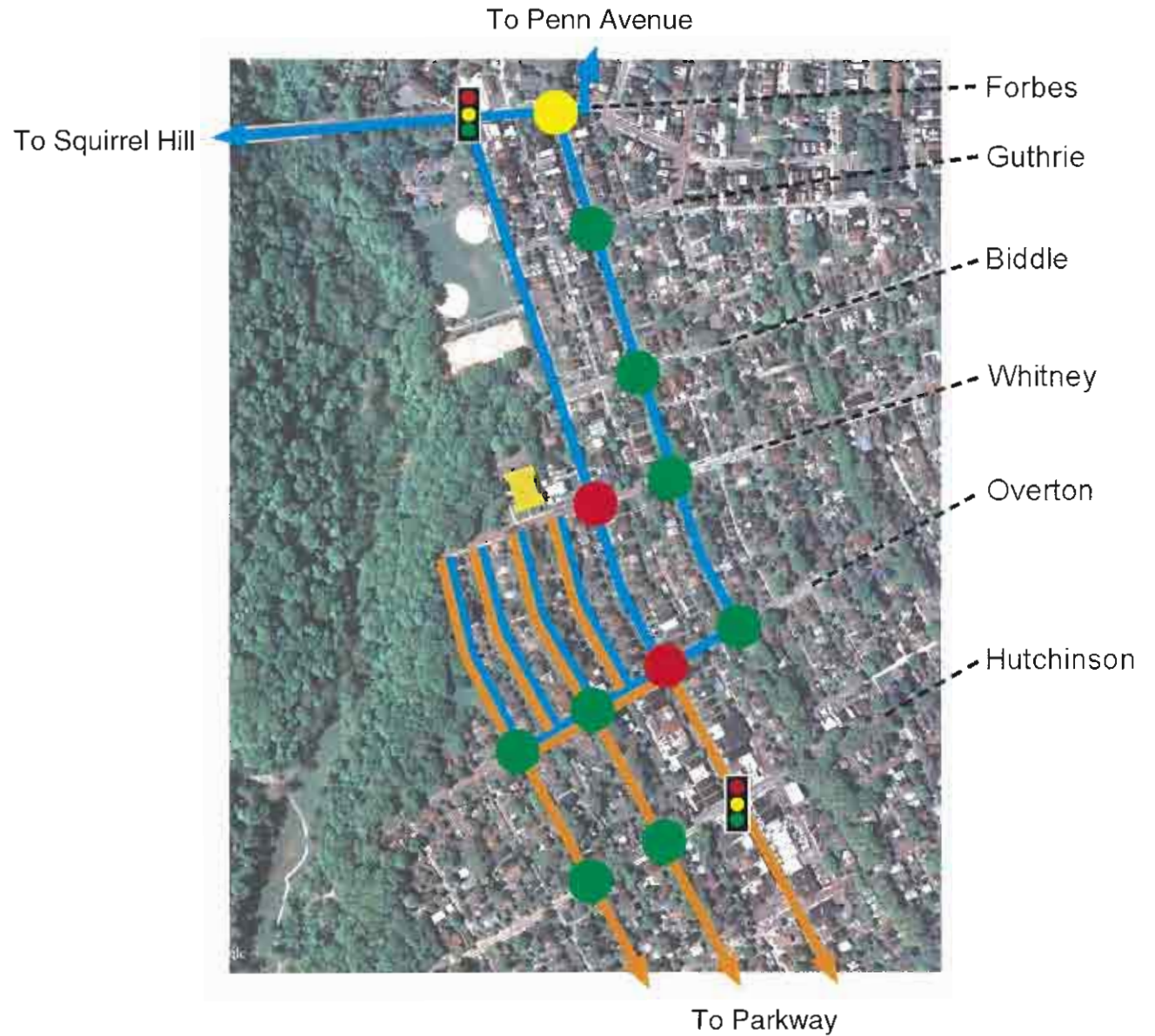
Morning Traffic (7:45 am to 8:00 am)

Regent Square Commuting

-  To Squirrel Hill/Penn Ave
-  To Parkway

Intersections Levels of Service

-  Good: A, B
-  Medium: C, D
-  Poor: E, F



**The Environmental Charter School
at Frick Park**



Event Parking

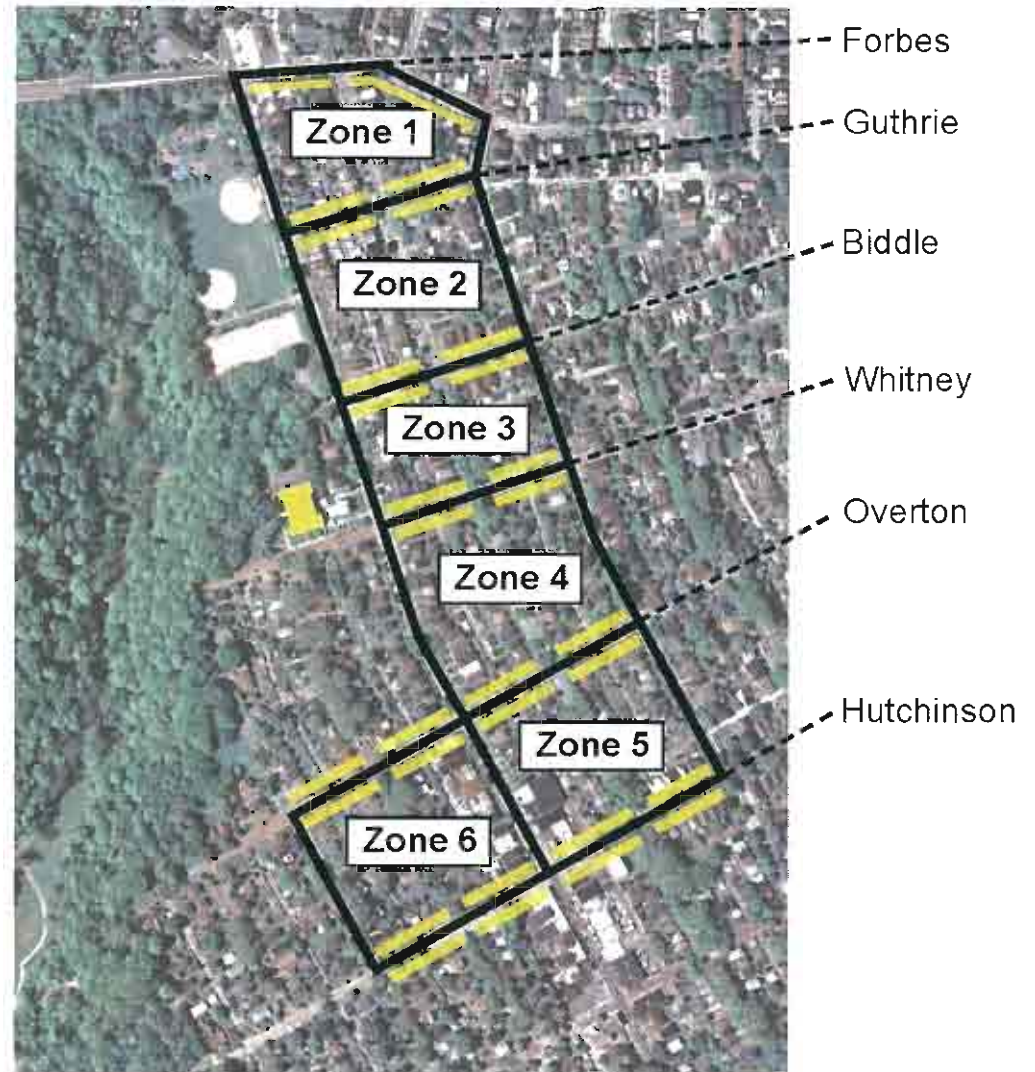
250 Cars

Existing:

- Large event parking for entire school population
2 times a year

Proposed:

- Large event parking for half of school population
4 times a year (no volume increase over existing)
- Parents assigned to parking zones
- Large event parking policy is part of the official parent policy.
- Parents given parking permit sticker identifying their zone.
- Each zone monitored by staff during large events.



**The Environmental Charter School
at Frick Park**



Rothschild
COLLABORATIVE
Doyno
ARCHITECTURE AND URBAN DESIGN



Staff Parking

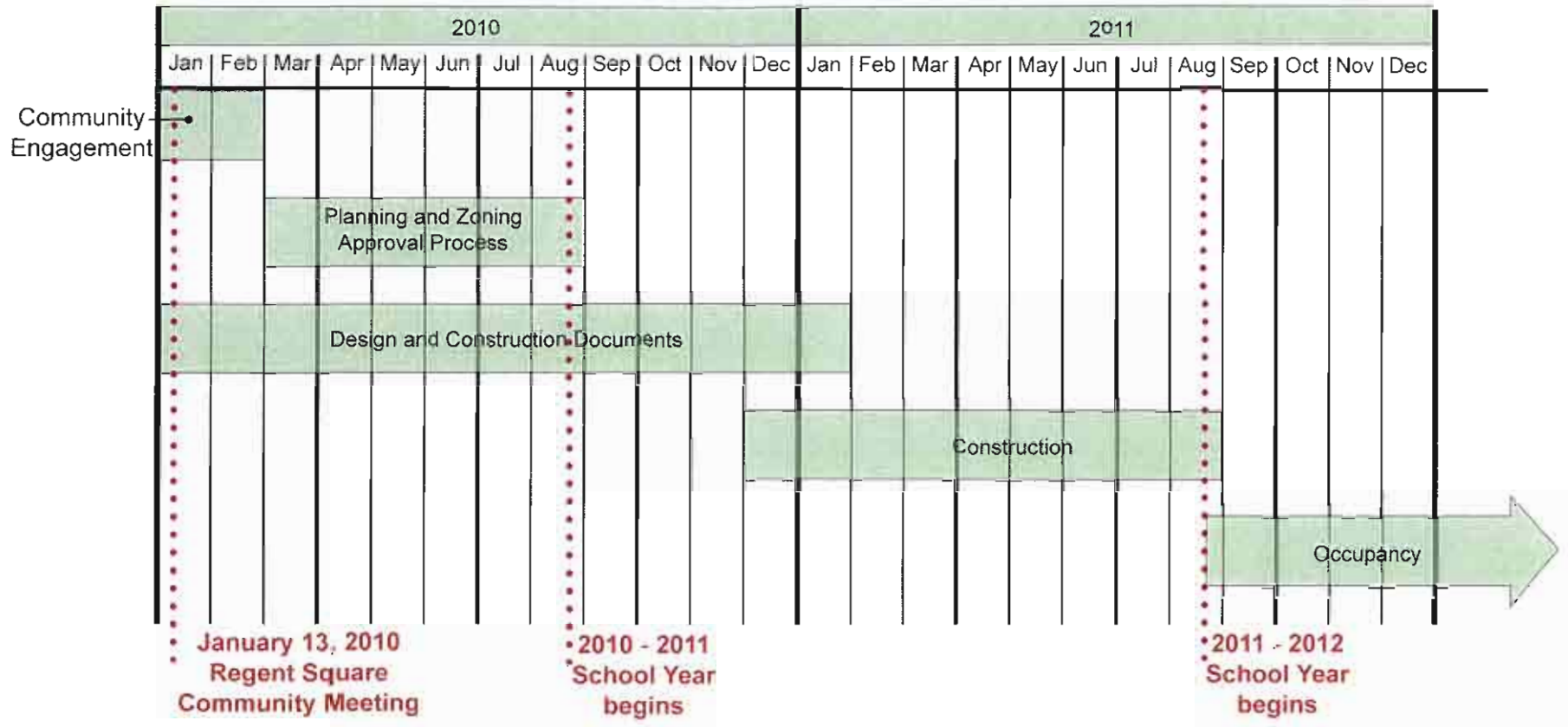
- All staff parking will be off site at Edgewood Towne Center in a leased lot for 80 spaces.
- ECS to provide shuttle service from staff parking lot to school.



**The Environmental Charter School
at Frick Park**



Schedule



The Environmental Charter School at Frick Park



Questions and Answers:

For further comments,
please see:

Jon McCann
Principal

**The Environmental
Charter School
at Frick Park**

Phone: 412.247.7970

Jon.McCann@imagineschools.com



**The Environmental Charter School
at Frick Park**

